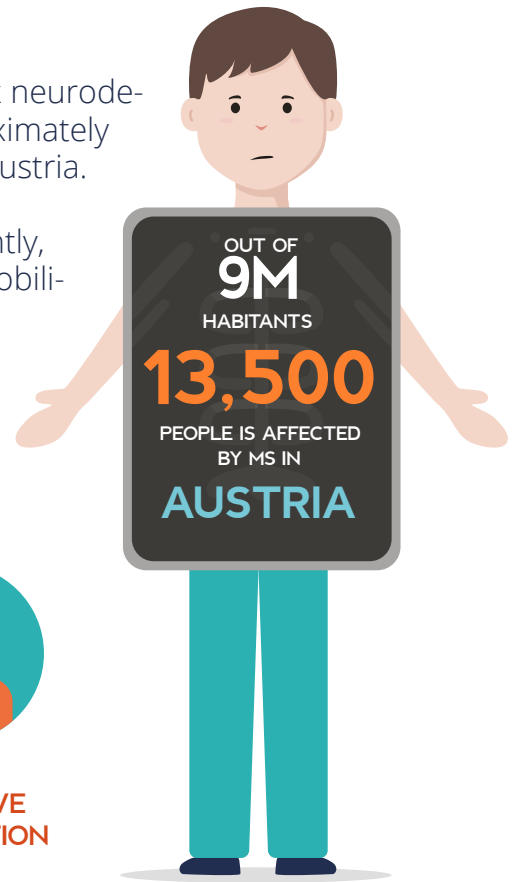


WHAT IS MS?

Multiple sclerosis (MS) is a complex neurodegenerative disease affecting approximately 13,500 of the 9 million¹ people in Austria.

Each person will experience this unpredictable disease differently, but common symptoms often include pain, fatigue, reduced mobility and cognitive dysfunction.

There is currently no cure for MS; however, optimal treatment and support have a significant effect on disease progression and quality of life for people with MS.



PAIN



FATIGUE



REDUCED MOBILITY

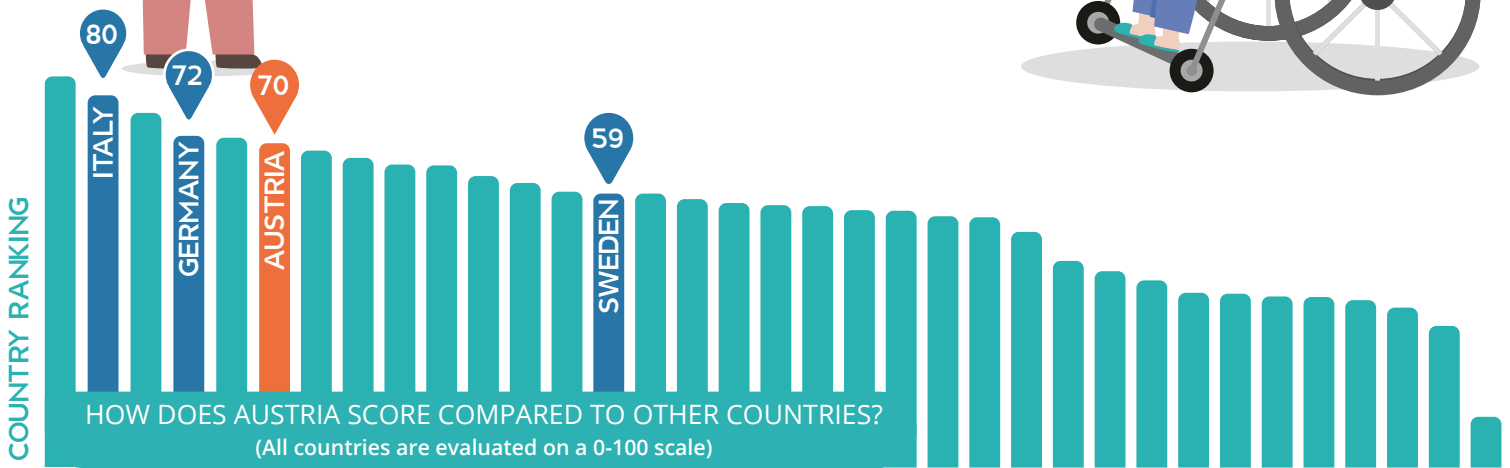


COGNITIVE DYSFUNCTION

COUNTRY CONTEXT

Healthcare organisation in Austria is complex as many actors are involved in healthcare decision-making at the federal and state level, including municipalities, commissioning bodies and the social health insurance provider.²

Spending on healthcare in Austria is above the European Union (EU) average. Although out-of-pocket payments for medicines and long-term care are higher than the EU average, there are exemptions for vulnerable groups and people with low incomes.





WHAT DID THE BAROMETER FIND?



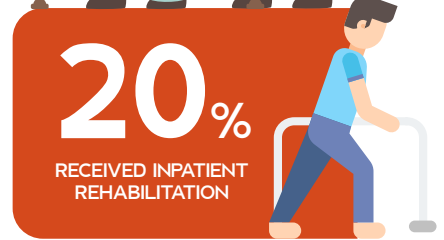
Austria has a well organised system for managing MS, with good access and reimbursement for disease-modifying drugs (DMDs) and symptomatic therapies. A new MS treatment registry has recently been established to support quality improvements and clinical research, and new outpatient centres for paediatric MS have been set up across the country. However, there are areas for improvement:



Only 17% of people with MS are in full-time employment and 29% in part-time employment.

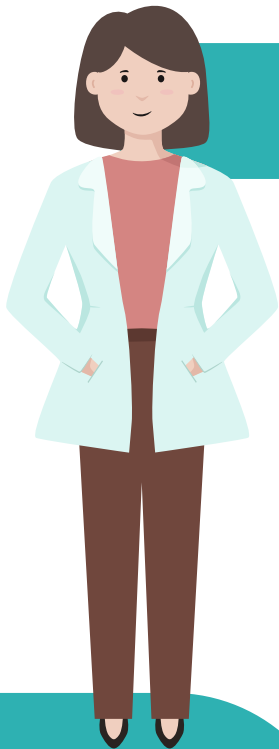


Approximately 10% of people with MS have access to outpatient rehabilitation.



Fewer than 20% of people with MS received inpatient rehabilitation in the past year.

POLICY RECOMMENDATIONS



Expand the outpatient rehabilitation services available for MS to improve consistency and flexibility of support for people with MS.



Provide MS-specific financial and practical support to help people with MS complete their education, and find and maintain employment.

Develop a national neurological disease plan that includes a comprehensive approach to MS, with an adequate budget for implementation.



More information can be found at www.emsp.org or contact buero@msges.at or office@oemsg.at

EMSP would like to thank the sponsors which have financially supported this project including Ammirall, Biogen, Bristol Myers Squibb, MedDay, Merck, Mylan, Novartis, Roche, and Sanofi Genzyme. EMSP retains editorial control of the Barometer.