



MS in the Czech Republic



WHAT IS MS?

Multiple sclerosis (MS) is a complex neurodegenerative disease affecting approximately 20,000 of the 10.7 million¹ people in the Czech Republic.

Each person will experience this unpredictable disease differently, but common symptoms include pain, fatigue, reduced mobility and cognitive dysfunction.

There is currently no cure for MS; however, optimal treatment and support have a significant effect on disease progression and quality of life for people with MS.



PAIN



FATIGUE



REDUCED MOBILITY



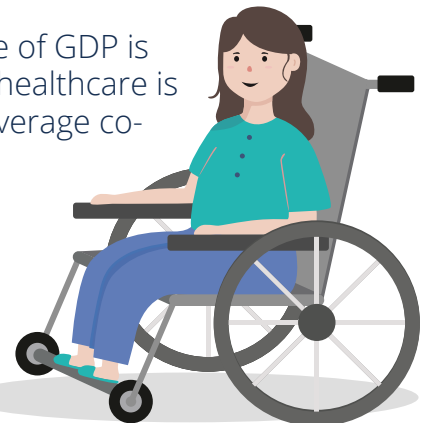
COGNITIVE DYSFUNCTION

COUNTRY CONTEXT

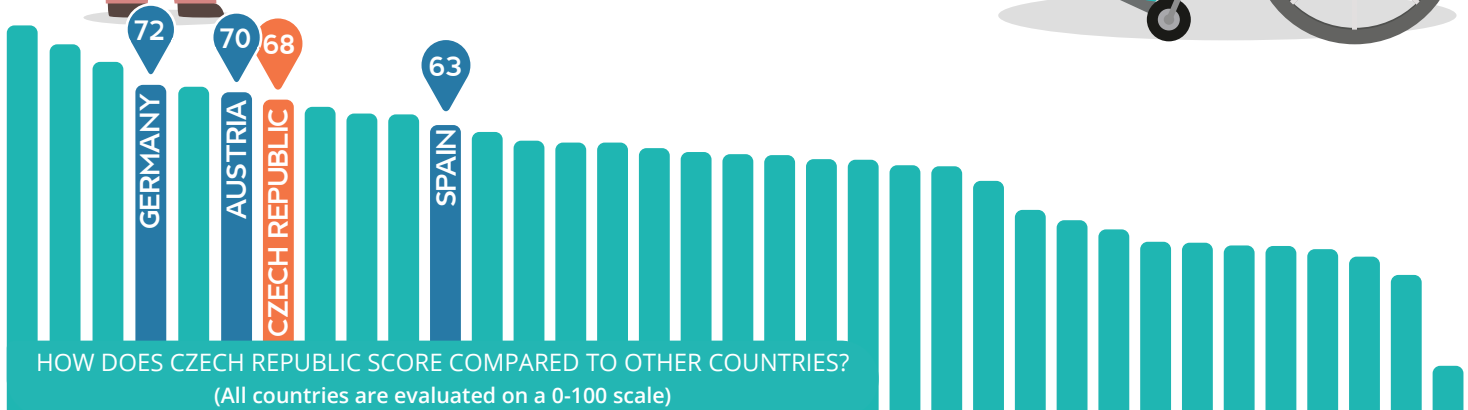
In the Czech Republic, healthcare is managed by the Ministry of Health, regional authorities and social health insurance funds.²

Spending on health as a share of GDP is below the European Union (EU) average; however, as healthcare is predominantly financed by public contributions, the average co-payment amount is below the EU average.

Recent reforms to the social health insurance funds have led to better provision of care for people living with chronic conditions.



COUNTRY RANKING





WHAT DID THE BAROMETER FIND?



Significant progress has been made in improving access to disease-modifying drugs and multidisciplinary care, increasing patient shared decision-making and establishing a patient registry for MS. However, there are many areas where progress is needed:

NO

LEGAL PROTECTIONS FROM HEALTH-RELATED DISMISSAL



There are no legal protections from health-related dismissal from employment for people with MS or disabilities

LESS THAN

40%

OF PEOPLE WITH MS HAVE ACCESS TO OCCUPATIONAL REHABILITATION



Under 40% of people with MS have access to occupational rehabilitation.

LESS THAN

10%

OF PEOPLE WITH MS HAVE ACCESS TO COGNITIVE REHABILITATION



Under 10% of people with MS have access to cognitive rehabilitation.

POLICY RECOMMENDATIONS



Establish legal provisions to protect people with disabilities and MS against dismissal from employment due to their condition.



Expand access to specialist MS centres with a wider provision of occupational and cognitive rehabilitation and paediatric neurologists.

Mandate inclusion of all people with MS in the MS patient registry



More information can be found at www.emsp.org or contact roska@roska.eu

EMSP would like to thank the sponsors which have financially supported this project including Ammirall, Biogen, Bristol Myers Squibb, MedDay, Merck, Mylan, Novartis, Roche, and Sanofi Genzyme. EMSP retains editorial control of the Barometer.

