



# MS in Germany



## WHAT IS MS?

Multiple sclerosis (MS) is a complex neurodegenerative disease affecting approximately 250,000 of the 83.7 million<sup>1</sup> people in Germany.

Each person will experience this unpredictable disease differently, but common symptoms often include pain, fatigue, reduced mobility and cognitive dysfunction.

There is currently no cure for MS; however, optimal treatment and support have a significant effect on disease progression and quality of life for people with MS.



PAIN



FATIGUE



REDUCED  
MOBILITY



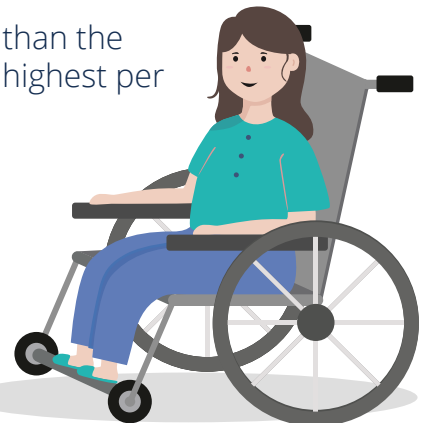
COGNITIVE  
DYSFUNCTION

## COUNTRY CONTEXT

Healthcare in Germany is organised by various bodies at the federal, regional and state levels.<sup>2</sup>

Healthcare spending is higher than the European Union (EU) average and the country has the highest per capita spend on healthcare in the EU.

Germany has near universal health coverage through compulsory health insurance that is primarily based on a public insurance scheme, with low out-of-pocket spending. However, care is noted to be fragmented and uncoordinated due to lack of digitisation.



HOW DOES GERMANY SCORE COMPARED TO OTHER COUNTRIES?  
(All countries are evaluated on a 0-100 scale)



# WHAT DID THE BAROMETER FIND?

Aiming to improve access to specialised care and support, Germany has established new MS centres and a Master in MS Management. Furthermore, the MS Society has supported the development of new patient empowerment programmes to better support people with MS. However, there are still areas for improvement:



## 15–25%

OF PEOPLE WITH MS ARE REGISTERED



Only 15–25% of people with MS are recorded in the national MS registry.

## NO DATA

ON THE PEOPLE WITH MS RECEIVING REHABILITATION



There are no available statistics for the numbers of people with MS receiving physical, psychological, cognitive or occupational rehabilitation.

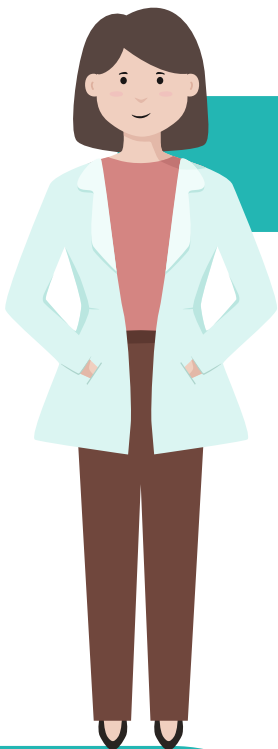
## NO

ACCREDITED PROGRAMME FOR MS-SPECIALIST NURSES



There is no accredited programme for MS-specialist nurses.

## POLICY RECOMMENDATIONS



Strengthen management of MS care by providing accredited training for MS-specialist nurses and ensuring that these roles are directly reimbursed by insurance providers.

Mandate inclusion of all people with MS into the MS patient registry and record data on use of rehabilitation services.



More information can be found at [www.emsp.org](http://www.emsp.org) or contact [dmsg@dmsg.de](mailto:dmsg@dmsg.de)

EMSP would like to thank the sponsors which have financially supported this project including Ammirall, Biogen, Bristol Myers Squibb, MedDay, Merck, Mylan, Novartis, Roche, and Sanofi Genzyme. EMSP retains editorial control of the Barometer.

